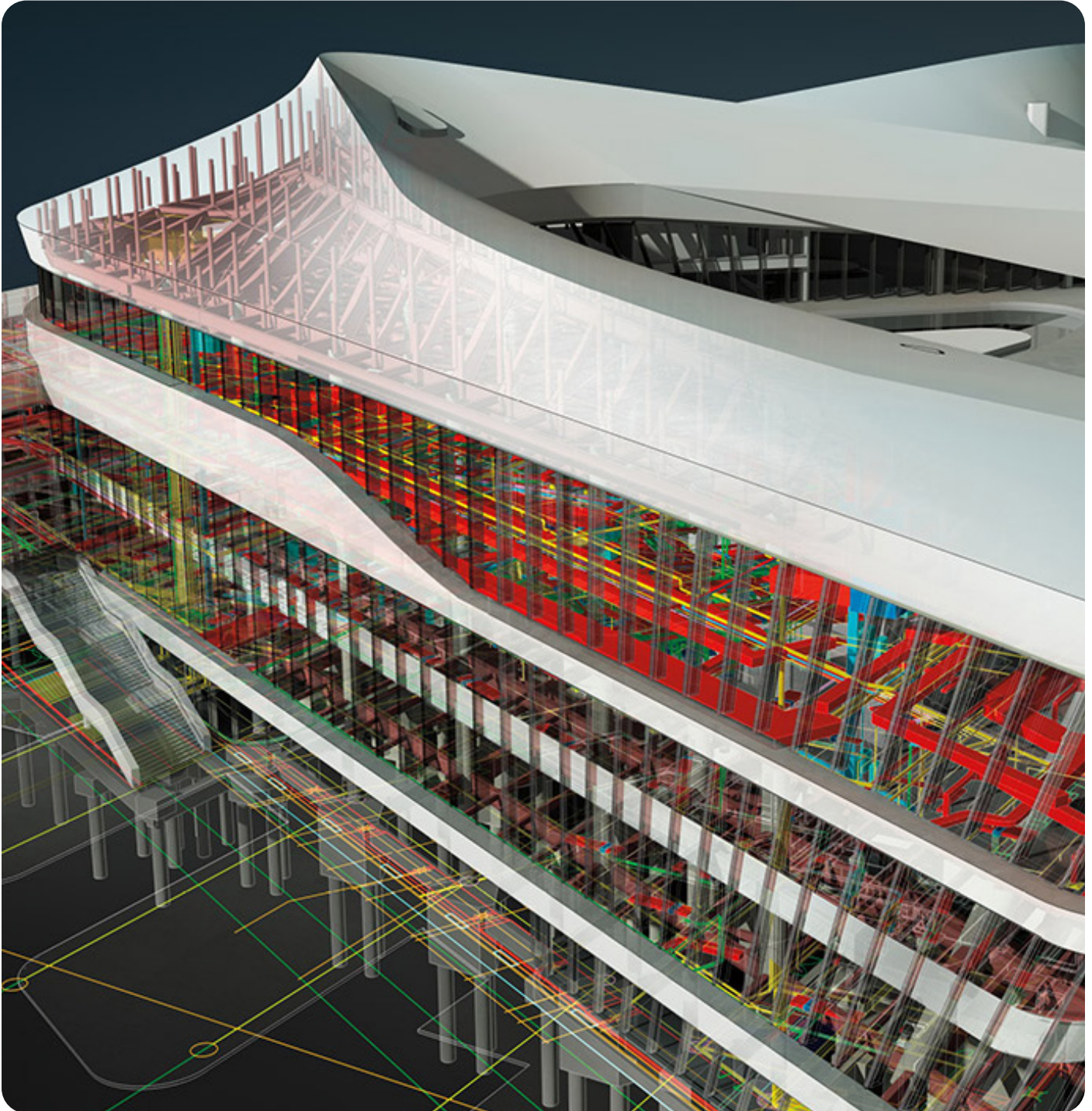


Architecture BIM Diploma

Part 1 / BIM Engineer



Module 1		Introduction	
NO	Module	Content	Hours
01	M01.01 Introduction	<ul style="list-style-type: none"> Introduction to BIM Understand BIM concepts, workflows, and how Revit fits into a professional BIM process. 	
02	M01.02 Introduction	<ul style="list-style-type: none"> User Interface Learn to navigate Revit's interface and organize projects efficiently. 	
03	M01.03 Introduction	<ul style="list-style-type: none"> Navigation and selection tools Master element selection, modification, and interactive editing tools. 	
04	M01.04 Introduction	<ul style="list-style-type: none"> Creating levels and associated plans Create levels, manage views, and set up projects using custom templates. 	
05	M01.05 Introduction	<ul style="list-style-type: none"> Creating axes (grids) and modifying its options Create and control grids to ensure accurate model coordination. 	

Module 2		Walls	
NO	Module	Content	Hours
06	M02.01 Walls	<ul style="list-style-type: none"> Modeling Walls Model basic, stacked, and in-place Walls using best practices. 	
07	M02.02 Walls	<ul style="list-style-type: none"> Custom wall shapes and profile Create non-standard wall shapes and custom profiles. 	
08	M02.03 Walls	<ul style="list-style-type: none"> Creating wall openings Add and control openings for doors, windows, and services. 	
09	M02.04 Walls	<ul style="list-style-type: none"> Creating wall types Build and modify wall types with proper layer structures. 	
10	M02.05 Walls	<ul style="list-style-type: none"> Working with Drawing Tools Use drawing tools to accurately sketch and control geometry. 	
11	M02.06 Walls	<ul style="list-style-type: none"> Working with Modify Tool Edit elements precisely using Revit modification commands. 	
12	M02.07 Walls	<ul style="list-style-type: none"> Creating Wall Sweeps (Cornices) and Reveals Add architectural details such as cornices and reveals. 	

Module 3		Doors, Windows and furniture	
NO	Module	Content	Hours
13	M03.01 Doors, Windows and furniture	<ul style="list-style-type: none"> Inserting Doors and Windows Insert and control parametric door and window families. 	
14	M03.02 Doors, Windows and furniture	<ul style="list-style-type: none"> Adding Components, furniture and plumbing fixtures Add furniture and plumbing fixtures to models. 	
15	M03.03 Doors, Windows and furniture	<ul style="list-style-type: none"> Creating furniture plans Create coordinated furniture layout plans. 	
16	M03.04 Doors, Windows and furniture	<ul style="list-style-type: none"> Creating new component types Create custom component families. 	
17	M03.05 Doors, Windows and furniture	<ul style="list-style-type: none"> loading families from Revit libraries I Internet libraries Import and manage families from libraries and online sources. 	

Module 4		CAD, image underlays	
NO	Module	Content	Hours
18	M04.01 CAD, image underlays	<ul style="list-style-type: none"> Importing images and using as a modelling aid Use images as modeling references. 	
19	M04.02 CAD, image underlays	<ul style="list-style-type: none"> Import I link cad files Link and import CAD drawings into Revit. 	
20	M04.03 CAD, image underlays	<ul style="list-style-type: none"> Controlling cad layers visibility and graphics. Control CAD layer visibility and graphics. 	
21	M04.04 CAD, image underlays	<ul style="list-style-type: none"> Using cad files as an underlay for the BIM model Model accurately using CAD files as underlays. 	

Module 5		Curtain walls	
NO	Module	Content	Hours
22	M05.01 Curtain walls	<ul style="list-style-type: none"> Creating Curtain Walls Design and customize curtain wall systems. 	
23	M05.02 Curtain walls	<ul style="list-style-type: none"> Curtain Wall Type properties Control panels, patterns, and adaptive systems. 	
24	M05.03 Curtain walls	<ul style="list-style-type: none"> Embedding curtain walls in basic walls Integrate curtain walls within basic walls. 	
25	M05.04 Curtain walls	<ul style="list-style-type: none"> Embedding basic walls in curtain walls Insert basic walls into curtain wall systems. 	
26	M05.05 Curtain walls	<ul style="list-style-type: none"> Attaching Mullions to Curtain Grids Attach and control mullions in curtain grids. 	
27	M05.06 Curtain walls	<ul style="list-style-type: none"> Working with Curtain Wall Panels Fa Edit and customize curtain wall panels. mily 	
28	M05.07 Curtain walls	<ul style="list-style-type: none"> Adding doors and windows to curtain walls Add doors and windows to curtain walls. 	
29	M05.08 Curtain walls	<ul style="list-style-type: none"> Creating curtain walls with spider system Create spider glass curtain wall systems. 	
30	M05.09 Curtain walls	<ul style="list-style-type: none"> Creating louver systems by curtain walls Design louver systems using curtain walls. 	
31	M05.10 Curtain walls	<ul style="list-style-type: none"> Creating double facade systems using curtain walls Create advanced double-skin facade systems. 	
32	M05.11 Curtain walls	<ul style="list-style-type: none"> Creating Islamic patterns using curtain walls Design parametric Islamic patterns using curtain walls. 	
33	M05.12 Curtain walls	<ul style="list-style-type: none"> Creating nested curtain walls Build complex nested curtain wall systems. 	

Module 6		Modeling Floors	
NO	Module	Content	Hours
34	M06.01 Modeling Floors	<ul style="list-style-type: none"> Modeling Floors Model structural and architectural floors. 	
35	M06.06 Modeling Floors	<ul style="list-style-type: none"> Creating Shaft Openings Create vertical shaft openings. 	
36	M06.03 Modeling Floors	<ul style="list-style-type: none"> Creating Sloped Floors Design floors with slopes and drainage. 	
37	M06.04 Modeling Floors	<ul style="list-style-type: none"> Creating finish floors Apply finish layers to floors. 	
38	M06.05 Modeling Floors	<ul style="list-style-type: none"> Modifying floors using shape editing tools Modify floors using shape editing tools. 	

Module 7		Modeling Ceilings	
NO	Module	Content	Hours
39	M07.01 Modeling Ceilings	<ul style="list-style-type: none"> Modeling Ceilings (automatic and by sketch) Model ceilings automatically or by sketch. 	
40	M07.02 Modeling Ceilings	<ul style="list-style-type: none"> Adding Ceiling Fixtures Add lighting and ceiling elements. 	
41	M07.07 Modeling Ceilings	<ul style="list-style-type: none"> Creating compound ceiling structures Create layered ceiling systems. 	
42	M07.04 Modeling Ceilings	<ul style="list-style-type: none"> Creating Ceiling Soffits and cove lights. Design ceiling soffits and cove lighting details. 	

Module 8		Modeling Roofs	
NO	Module	Content	Hours
43	M08.01 Modeling Roofs	<ul style="list-style-type: none"> Creating Roofs by Footprint Model roofs using multiple roof methods. 	
44	M08.02 Modeling Roofs	<ul style="list-style-type: none"> Reference Planes and Work Planes Control geometry using reference planes. 	
45	M08.03 Modeling Roofs	<ul style="list-style-type: none"> Creating complex roof models Create advanced roof forms. 	
46	M08.08 Modeling Roofs	<ul style="list-style-type: none"> Cleaning up wall and roof intersections Clean intersections between roofs and walls. 	
47	M08.05 Modeling Roofs	<ul style="list-style-type: none"> Joining and disjoining roofs Control roof connections. 	
48	M08.08 Modeling Roofs	<ul style="list-style-type: none"> (Vertical I by face) openings Create vertical and face-based openings. 	
49	M08.07 Modeling Roofs	<ul style="list-style-type: none"> Creating Dormers- dormer openings Design dormers and roof openings. 	
50	M08.08 Modeling Roofs	<ul style="list-style-type: none"> Creating Roof soffits, Gutters and fascias Add roof finishes and drainage elements. 	

Module 9		Stairs, Ramps and Railings	
NO	Module	Content	Hours
51	M05.01 Stairs, Ramps and Railings	<ul style="list-style-type: none"> Creating stairs by sketch (linear- spiral) Design linear and spiral stairs. 	
52	M05.02 Stairs, Ramps and Railings	<ul style="list-style-type: none"> Creating complex stair shapes Create advanced stair geometries. 	
53	M05.03 Stairs, Ramps and Railings	<ul style="list-style-type: none"> Creating multi-level stairs Design stairs spanning multiple levels. 	
54	M05.04 Stairs, Ramps and Railings	<ul style="list-style-type: none"> Creating Component Stairs (Linear- spiral) Use stair families effectively. 	
55	M05.05 Stairs, Ramps and Railings	<ul style="list-style-type: none"> Assembled (Steel and wood) stairs type properties Control steel and wood stair properties. 	
56	M05.06 Stairs, Ramps and Railings	<ul style="list-style-type: none"> (Vertical by face) openings Create openings by face. 	
57	M05.07 Stairs, Ramps and Railings	<ul style="list-style-type: none"> Concrete (Cast-inplace and precast) type properties Model cast-in-place and precast stairs. 	
58	M05.08 Stairs, Ramps and Railings	<ul style="list-style-type: none"> Creating stair shaft openings Create stair shaft openings. 	
59	M05.09 Stairs, Ramps and Railings	<ul style="list-style-type: none"> Modelling Railings Model and customize railing systems. 	
60	M05.10 Stairs, Ramps and Railings	<ul style="list-style-type: none"> Modifying Railings type properties Modify railing parameters. 	
61	M05.11 Stairs, Ramps and Railings	<ul style="list-style-type: none"> Creating Custom Railings Create unique railing designs 	
62	M05.12 Stairs, Ramps and Railings	<ul style="list-style-type: none"> Creating Ramps Design accessible ramp systems. 	

Module 10	Documentation and schedules
-----------	-----------------------------

NO	Module	Content	Hours
63	M10.01 Documentation and schedules	<ul style="list-style-type: none"> Creating (floor- ceiling) plan views Create floor and ceiling plans for documentation. 	
64	M10.02 Documentation and schedules	<ul style="list-style-type: none"> Duplicating Views Duplicate views with proper detailing. 	
65	M10.03 Documentation and schedules	<ul style="list-style-type: none"> Adding Callout Views Create callout views. 	
67	M10.04 Documentation and schedules	<ul style="list-style-type: none"> Creating detail views Produce detailed construction views. 	
68	M10.10 Documentation and schedules	<ul style="list-style-type: none"> Creating section views- 30 sectional views Generate professional sectional views. 	
69	M10.06 Documentation and schedules	<ul style="list-style-type: none"> Adding text and dimension to views Annotate drawings correctly. 	
70	M10.07 Documentation and schedules	<ul style="list-style-type: none"> Introduction to schedules and BOQs Create quantity schedules. 	
71	M10.08 Documentation and schedules	<ul style="list-style-type: none"> Using schedules templates Use and manage schedule templates. 	
72	M10.09 Documentation and schedules	<ul style="list-style-type: none"> Creating sheets and placing views to it Assemble drawing sheets. 	
73	M10.10 Documentation and schedules	<ul style="list-style-type: none"> Export views and sheets to Autocad Export drawings to AutoCAD. 	
74	M10.11 Documentation and schedules	<ul style="list-style-type: none"> Printings sheets and views Print sheets and views correctly. 	